



WOODLEY
COLES



Streatham & Clapham High School

Client

Girls Day School Trust

Value

£13,700,000

Services

Quantity Surveying & Cost Management

Sectors

Education

An award-winning project, with two distinct phases of work.

The first added a new floor to accommodate a sixth form centre providing social and teaching areas at roof level with access being provided by extending two existing stair towers.

The second phase introduced an extension at ground level to house a new dining room, kitchen and to form a new entrance and reception area.

The method of construction utilises a cross laminated timber (CLT) frame to keep structural loading on the existing building to a minimum. Although to accommodate the additional load, localised foundation strengthening was also necessary and accomplished by installing mini-piles.



The facades are formed of a ceramic cladding system utilising both baguettes and tiles.

Internally, Cotterell Vermulen Architecture specified that the timber frame should be left exposed to stunning effect. The finishes are to a high quality with bespoke built in furniture storage solutions.

The works were completed whilst the school remained in occupation, with the necessary temporary works installed to allow business as usual.

Woodley Coles provided full pre and post contract quantity surveying services from early feasibility to the agreement of the final account.

Architect

Cotterell Vermulen Architecture

Contractor

Rooff

Project Manager

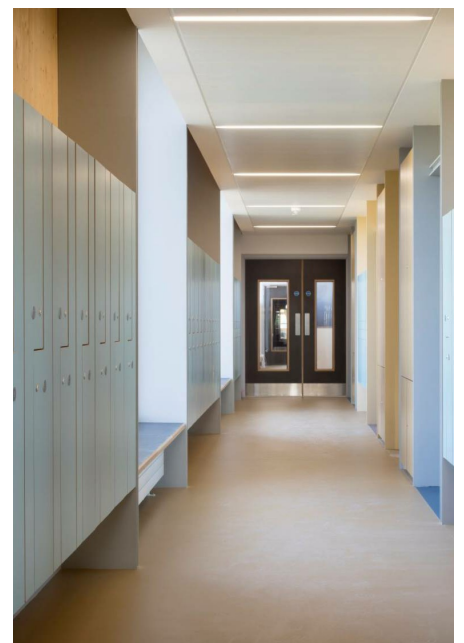
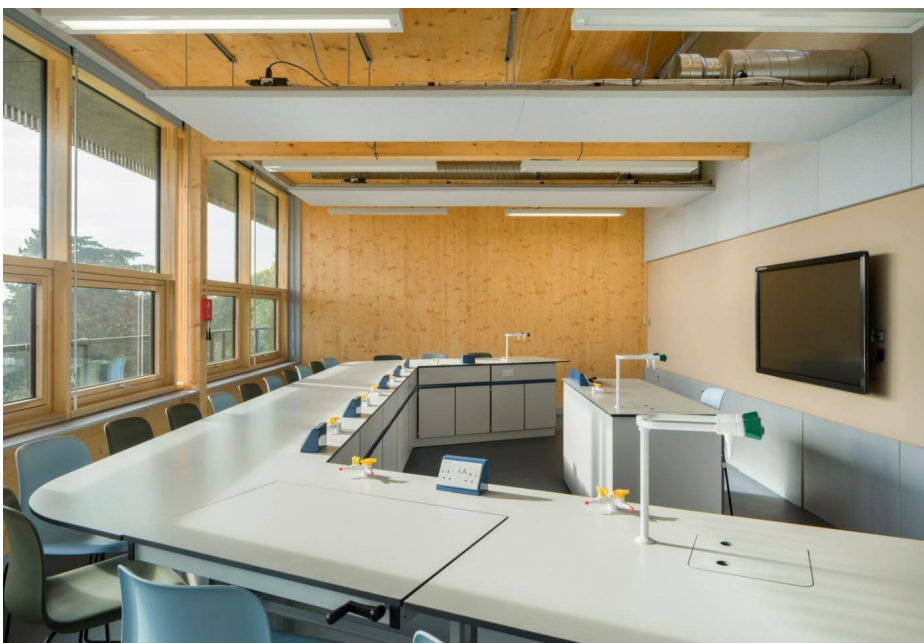
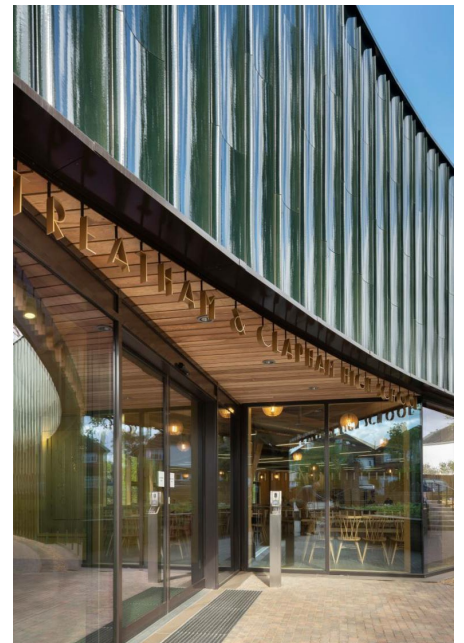
Tuffin Terraby Taylor

Structural Engineer

engineers HRW

Services Engineer

OR Consulting





WOODLEY
COLES

Kent Office

01304 806090

kent@woodleycoles.com

London Office

020 3307 8379

london@woodleycoles.com



RICS®

Cambridgeshire Office

01223 236663

cambridge@woodleycoles.com